



## **Acknowledgment of Country**

We acknowledge the original custodians of the land, the Dharug people, and pay our respect to their elders past and present.

## **Foreword by the President**

On behalf of the Management committee of RCSI I am pleased to present and endorse the RCSI 5 year Strategic Plan which was developed in consultation with Can Yasmut, CEO of our peak body, the LCSA.



## **Our Vision**

“Making a Difference”

## **Our Mission**

Richmond Community Services Incorporated (RCSI) will work together with local residents and the community to identify needs and improve services to the Hawkesbury.

## **Our Values**

### **Respect**

RCSI acknowledges the Traditional Dharug Owners of this land and commits to ensure that all services to all residents will be provided in an environment that fosters respect and dignity to all people

### **Co-operation**

RCSI will work with local residents and services to identify both the individual and collective needs of the Hawkesbury community

### **Accessibility**

As a centre that celebrates diversity in the community, RCSI is committed to providing services to all people regardless of race, age, gender, disability or sexuality

### **Individual Advocacy**

RCSI will endeavour to make information available to ensure that individuals do not suffer through lack of knowledge of their rights and responsibilities or of the services available to them or through an inability to express their needs effectively

### **Social Advocacy**

RCSI will, in partnership with the community, exercise a responsible influence on the development of social policies and services, both locally and nationally



### **Our Aspiration**

We want an inclusive and diverse community where people help and support each other, and where people show respect to one another. We are concerned about social isolation and a lack of connection in the community. We believe we need to focus on building trust and a stronger sense of belonging in the community. We will achieve this by engaging with community members and organisations that share our values and aspiration.

### **Our Strategic Goals**

- 1) To be an effective, viable and sustainable organisation
- 2) To provide effective services and activities for vulnerable children, families, young people and communities
- 3) To be responsive to the community



## **Our Strategic Objectives**

To be an effective, viable and sustainable organisation:

To be financially viable

To have a board of community members with relevant skills and experience

To have succession plans for both board and staff

To provide effective services and activities for vulnerable children, families, young people and communities

To work towards retaining existing funding income

To explore new sources of income

To work in partnership with other services in the Hawkesbury

To be responsive to the community

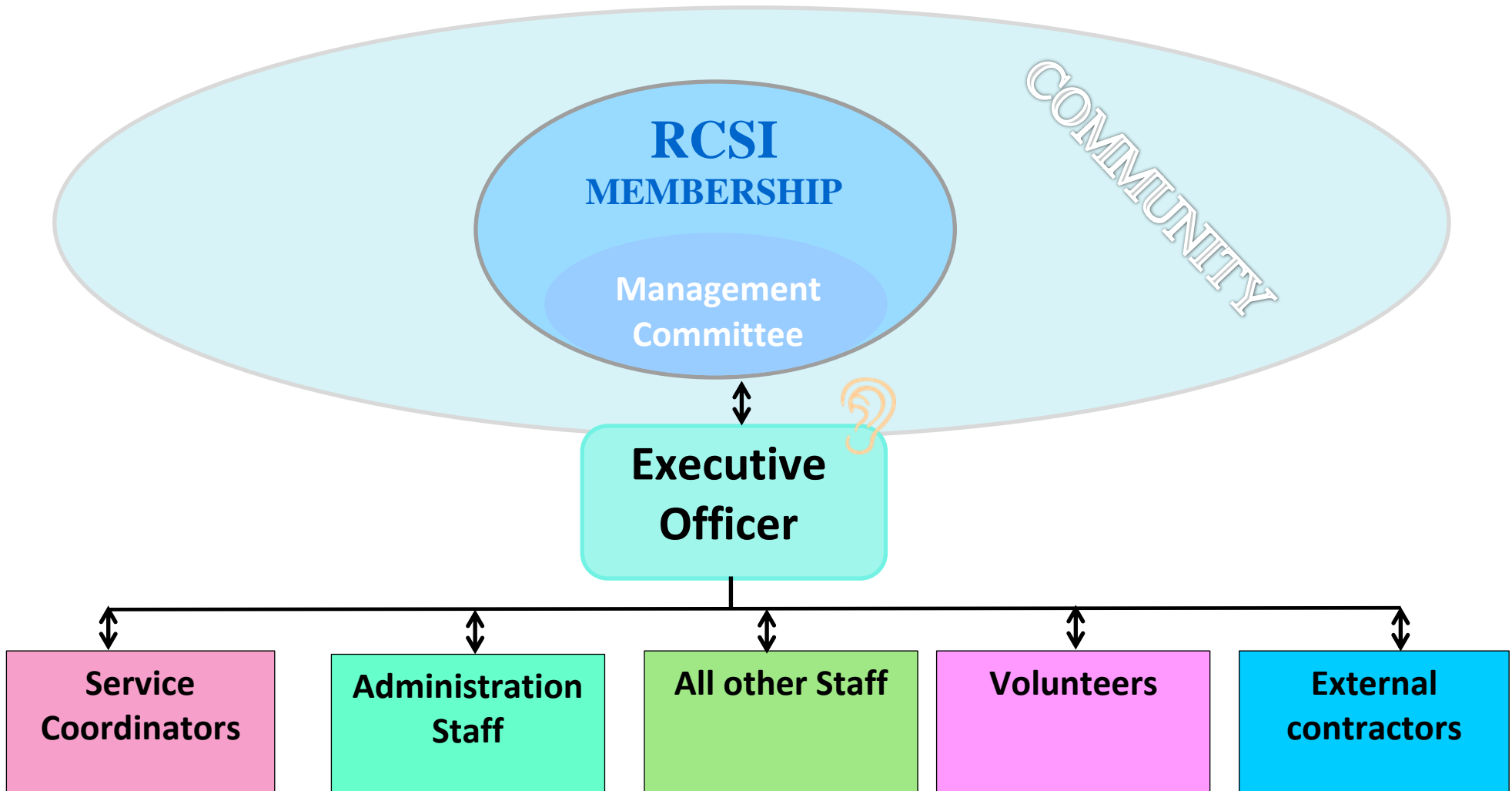
To facilitate community engagement activities

To involve clients and community members in program design

To support collaborative actions with community stakeholders

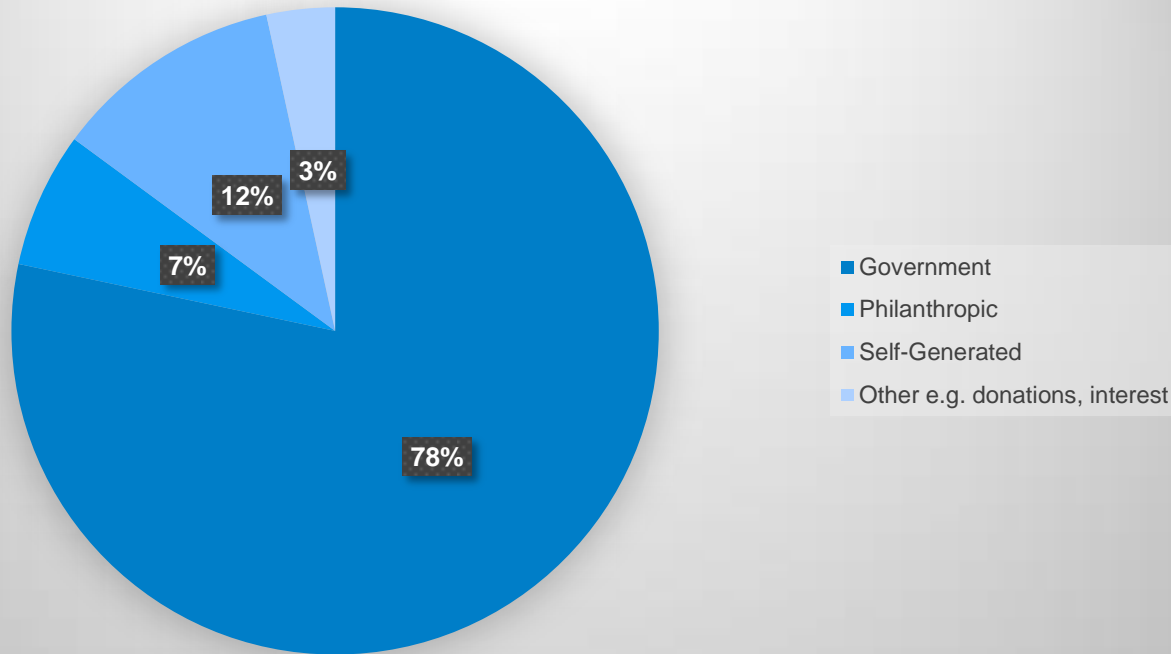


**Our Organisational Chart**





### RCSI's Income by Source (as of July 2017)



We acknowledge that the majority of our income is from public funds, and we appreciate the importance of philanthropic and self-generated income.



**Our Funders (as of July 2017)**

NSW Department of Family and Community Services

Commonwealth Department of Healthy Ageing

Commonwealth Department of Social Services

The Scully Fund

**Our Current Partners (as of December 2017)**

**FaCS, ADHC, DoHA & HACC, DSS, The Scully Fund, Hawkesbury City Council, Hawkesbury Community Outreach and Mobile Minders, the Lions Club, TAFE, Merana, Northcott Disability Services, the Family Referral Service, Hawkesbury Cancer Support, Hawkesbury Community Services Inc., Windsor Professional Centre, Hawkesbury LAC, our interagencies: HARC, HUBS\*, HANADV, HawkFams, Right Connections, the HACC forum as well as our peak bodies LCSA, NCOSS, WSCF, FaMS (\*HUBS (Hawkesbury Unites for Better Services) membership of which includes: Bligh Park Community Services Inc., Glossodia Community Centre Inc., Hawkesbury Community Outreach Services Inc., Hawkesbury Community Services Inc., Merana Aboriginal Community Association, North Richmond Community Centre Inc., Peppercorn Services Inc., Richmond Community Services Inc. Ted Noffs Foundation and HAWKS - The Women's Cottage)**